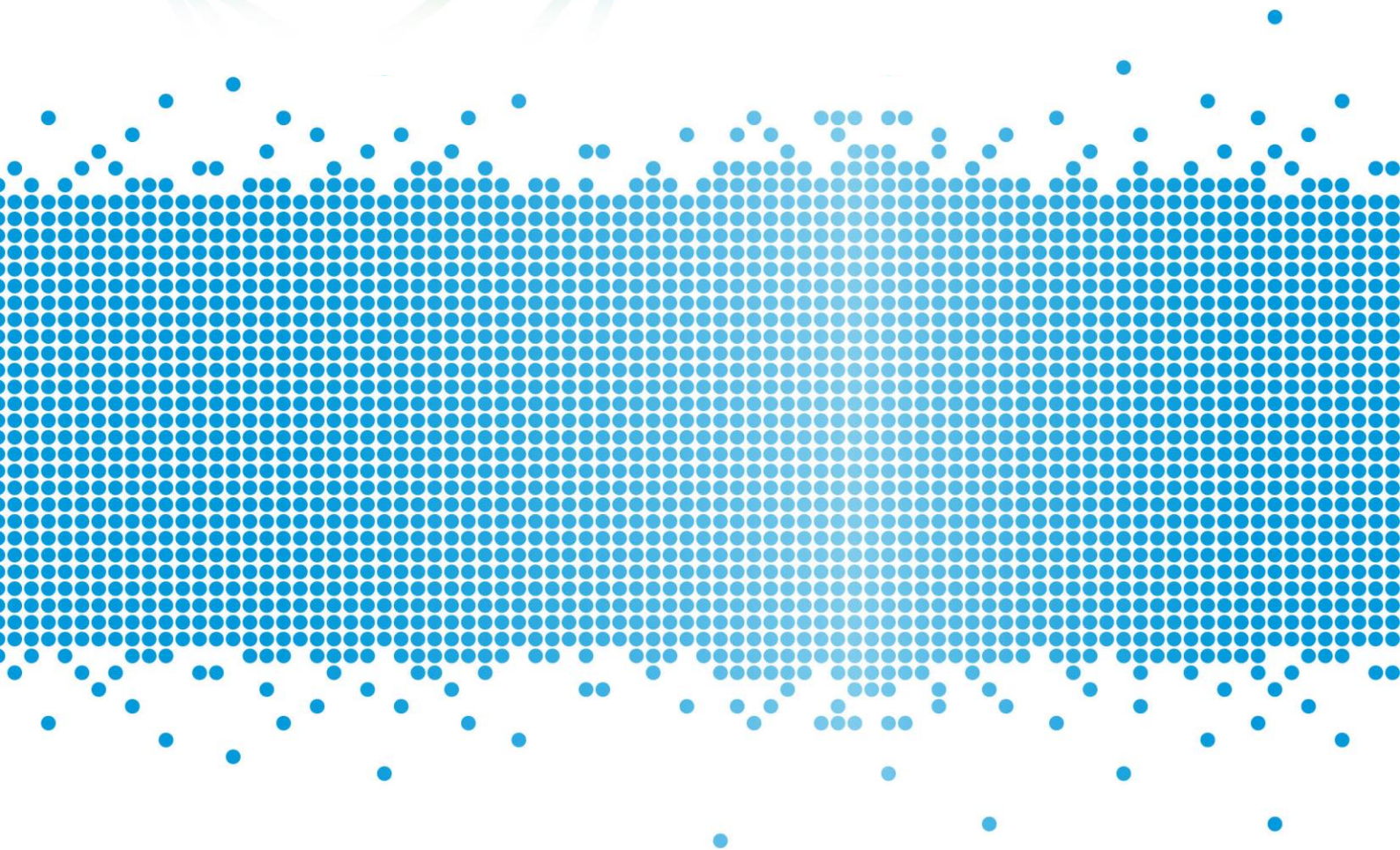


Financial Services and Credit Guide



Country Wide Wealth



It is important that you read this Financial Services and Credit Guide (FSCG). It contains information that will help you decide whether to use any of the financial services offered by us, as described in this guide, including:

- who we are and how we can be contacted
- the advice and services we provide
- information about our licensee Charter Financial Planning Limited (Charter)
- our fees and how we, your adviser and Charter, are paid in connection with those services
- how we manage your private information
- how you can complain about a matter relating to us or Charter

Documents you may receive

We will provide you with a number of documents as you progress through our financial planning process to capture each stage of your advice journey. We may provide these documents to you electronically to your nominated email address, unless otherwise agreed.

When we provide personal advice it will normally be documented and provided to you in a Statement of Advice (SoA), known as a financial plan. The financial plan contains a summary of your goals and the strategies and any financial products we may recommend to achieve your goals. It also provides you with detailed information about product costs and the fees and other benefits we and others will receive, as a result of the advice we have provided.

If we provide further personal advice a financial plan may not be required. We will keep a record of any further personal advice we provide you for seven years. You may request a copy of such records by contacting our office during that period.

When we provide credit advice we will conduct a preliminary assessment to determine the suitability of a particular product. This is normally documented and provided to you in a Record of debt advice or a Credit Proposal. We will retain a record of the debt advice or Credit Proposal which you may request by contacting our office within seven years of the assessment. We will only provide recommendations to apply for a particular credit contract with a certain lender or increase the credit limit of a particular credit contract where the contract meets your needs and objectives and is not unsuitable to your circumstances.

If we recommend or arrange a financial product for you we will provide a product disclosure statement (PDS) or investor directed portfolio service (IDPS) guide where relevant. These documents contain the key features of the recommended product, such as its benefits and risks as well as the costs you will pay the product provider to professionally manage that product.

You should read any warnings contained in your advice document, the PDS or IDPS guide carefully before making any decision relating to a financial strategy or product.

About our practice

Summary of the business

Name	Country Wide Wealth Pty Ltd as trustee for Chapman Family Trust trading as Country Wide Wealth
Australian Business Number	69 418 112 032
Australian Company Number	147 686 593
Corporate Authorised Representative Number	417733
Corporate Credit Representative Number	479643

Our office contact details

Address	Level 1, 400 Ocean View Road, Ettalong Beach, NSW 2257
Phone	02 4342 9215
Email	info@countrywidewealth.com.au
Website	www.countrywidewealth.com.au

This guide provides information about our advisers including their contact details, qualifications, experience, the services they may offer and financial products they can provide advice on.

Our advice and services

We can provide you with personal and general advice about specific services and financial products listed below. We can also arrange for financial products to be issued without advice from us.

Individual advisers within our practice may not be qualified to provide advice in all of the services and products noted below. Their individual profile guides will note any limitations to the advice they are qualified to provide. At all times we will ensure the appropriate adviser is available to you to provide advice consistent with your goals.

The following table sets out the areas of advice we can help you with as well as the products and services we can arrange.

Any additional advice or services we can offer you, or limitations to the list below, will be outlined in **Our Financial Advisers and Credit Advisers** on page 16.

We can provide advice on	We can arrange the following products and services
— Investments strategies (strategic asset allocation)	— Superannuation, including retirement savings accounts
— Budget and cash flow management	— Self-managed superannuation funds (SMSF)
— Debt management (including borrowing for personal and investment purposes)	— Borrowing within your SMSF
— Salary packaging	— Managed investments
— Superannuation strategies and retirement planning	— Deposit and payment products (for example term deposits, cash management accounts and non-cash payment products)
— Personal insurance	— Standard margin loans
— Estate planning	— Retirement income streams, including pensions and annuities
— Centrelink and other government benefits	— Personal and group Insurance (life cover, disability, income protection and trauma)
— Ongoing advice and services, including regular portfolio reviews	— Loans including mortgages and personal loans, reverse mortgages and deposit bonds
	— Commercial loans
	— SMSF loans
	— Rural loans
	— Life investment products including whole of life, endowment and bonds
	— Securities (including listed securities)
	— Exchange traded funds and Listed investment companies
	— Arranging for listed securities, shares and debentures to be bought and sold via a platform and broker.
	— Investor directed portfolio services
	— Limited selection of investment guarantees

Charter maintains an approved products and services list, which includes products issued by AMP companies and a diversified selection of approved Australian and International fund managers. These have been researched by external research houses as well as our in-house research team.

Charter periodically reviews these products to ensure that they remain competitive with similar products that address similar client needs and objectives. Generally, we recommend products that are on the approved products and services list. However, if appropriate for your needs, we may, subject to Charter's approval, recommend other products.

A copy of the approved products and services list can be supplied to you upon request.

If we recommend a new platform or portfolio administration service, we use those issued or promoted by the AMP Group or as otherwise approved by Charter and where appropriate to your circumstances.

As at March 2018, the lenders whose products are most commonly recommended by Accredited Mortgage Consultants authorised by Charter are:

- | | |
|---------------------|---------------------------|
| — ANZ | — National Australia Bank |
| — Commonwealth Bank | — Bankwest |
| — AFG Home Loans | — St George Bank |
| — Bank of Melbourne | — Liberty Financial |
| — Suncorp | — Westpac |

Tax implications of our advice

Under the Tax Agent Services Act 2009, Country Wide Wealth Pty Ltd as trustee for Chapman Family Trust, trading as Country Wide Wealth is authorised by the Tax Practitioners Board to provide tax (financial) advice services on matters that are directly related to the nature of the financial planning advice provided to you. We will not consider any other tax matters in our advice to you. Where tax implications are discussed they are incidental to our recommendations and only included as an illustration to help you decide whether to implement our advice.

Transaction services

If you do not require advice, I can also arrange for you to apply for limited types of financial products where I can take your instructions and arrange for the transaction to be completed, without providing personal advice. If you wish to proceed without my advice, I will ask you to confirm your instructions, which I will document in writing. You can ask me for a copy of this documentation at any time.

Your relationship with us and using our services

You can contact us directly with any instructions relating to your financial products. This includes giving us instructions by telephone, mail or email. We can only accept your instructions via email once you have signed an authority form.

We will work with you to agree what advice and services we will provide and when and how often we will provide them.

Where you agree to ongoing advice and services, the details will be documented and provided to you in a service agreement. This includes the frequency of contact between us, service standards that may apply, any ongoing fee arrangements and how the service can be terminated.

If at any time you wish to terminate your relationship with us, please contact us using the details shown in this guide.

Providing information to us

It is important that we understand your circumstances and goals, so that we can provide you with appropriate advice and services. You have the right not to provide us with any personal information. Should you choose to withhold information, or if information you provide is incomplete or inaccurate the advice or services we provide you may not be appropriate for you.

It is also important that you keep us up to date by informing us of any changes to your circumstances so we are able to determine if our advice continues to be appropriate.

Our fees

The fees charged for our advice and services may be based on a combination of:

- A set dollar amount; or
- A percentage-based fee.

Our agreed advice and service fees may include charges for:

- Initial advice; and
- Ongoing advice.

Please note that for services in relation to insurance, banking deposit products, some loan products and older investment products, commissions may be paid by the product provider as follows:

- Initial commission - a percentage of the value of your investment contributions; and
- Ongoing commission - a percentage of the value of your investment balance, usually calculated at the end of each month in which you hold the investment.

Payment methods

We offer you the following payment options for payment of our advice fees:

- BPAY, direct debit (savings), credit card or cheque; and
- Deduction from your investment.

All fees and commissions will be paid directly to Charter as the licensee. They retain an amount (a licensee fee) to cover their licensee costs and the balance is passed on to us. The amount is determined annually, based on a number of factors, including our business revenue and the number of advisers in the practice.

For details of our service fees, please refer to **Schedule of fees** on page 20.

Other costs

Where other costs are incurred in the process of providing our advice and services to you, you will be liable for these costs. However, we will agree all additional costs with you prior to incurring them.

Other benefits we may receive

The following is a list of benefits we may receive other than those explained above. These are not additional costs to you. These benefits may be monetary or things like training, events or incentives we are eligible for.

In addition to the payments we may receive for our advice and services, we may receive other support services from the licensee. We may also be eligible to receive financial and training assistance, prizes and awards or events in recognition of financial planning excellence and innovation, and business performance. These benefits are paid at the licensee's discretion and the amounts are set by the licensee from time to time (usually on an annual basis). We may also participate in business lunches or receive corporate promotional merchandise tickets to sporting or cultural events and other similar items.

Development, management and advice recognition

We may qualify to receive a DMA payment to recognise our growth and professionalism. The DMA is based on a rate, calculated once per year, and determined by our ranking relative to other Charter Financial Planning practices. Up to 50% of all Charter Financial Planning practices may qualify for DMA payments. The relevant rate may range from 0% to 3.25%, depending on our ranking and whether or not we qualify for the certified quality advice program (see the "certified quality advice program" section below). The rate is then applied to our practice revenue of the prior year and paid to us in two instalments a year.

For example, if our DMA is set at 1% and our revenue for the prior year was \$200,000, we would receive a total of \$2,000 for that year, paid over two instalments.

How our performance is ranked

Ranking of practices is determined yearly by a points system which is a broad measure of the growth and professionalism of our practice as compared to other practices in the Charter Financial Planning network. The points system is based on a combination of factors within a balanced scorecard such as the quality of our services, compliance, our business goals and our engagement with our clients through a measure called Advice Growth Index (AGI). AGI measures the value of our fee for service revenue and the change in our clients' product holdings over the prior measurement period (usually a period of approximately 12 months).

Value participation scheme

AMP will provide us a payment based on the total in force annual premiums on some AMP insurance products and funds under management in some AMP wealth management products. The amount paid is based on the following:

- A tiered rate of up to 3% is applied incrementally to total premiums on some AMP insurance products. For example, if a client takes out a qualifying AMP insurance policy with an annual premium of \$3,000, we may receive an annual payment of up to \$90 in respect of that policy, with the rate applied dependent on the total combined premiums from all qualifying AMP insurance products.
- A tiered rate of up to 0.25% is applied incrementally to the total funds under management in qualifying AMP wealth management products. For example, if an existing client with a qualifying AMP wealth product invests a further \$40,000 into that product, we may receive up to \$100 in respect of that specific investment, with the rate applied dependent on the total qualifying funds under management.

From 1 July 2014, all investments in AMP wealth management products by new clients have been excluded from the scheme.

From 1 January 2018, all premium for new policies from the relevant AMP insurance products have been excluded from the scheme.

Certified quality advice program

On meeting eligibility criteria and gaining access into the program, we may become eligible for discounts on licensee fees, a 10% increase in purchase price under the buyout option and a 10% increase in DMA payment should we qualify. Eligibility is assessed on professional operations and processes, high quality advice standards and education.

Buyout option

If we leave the financial services industry, we are eligible to sell the register rights of our client base to Charter Financial Planning Limited. The valuation of these rights is based on a multiple of the annual financial planning revenue generated by our practice.

Personal and professional development

Charter provides personal and professional development opportunities in the form of education and professional development programs, offered annually to qualifying practices.

Summit

The Summit is a national convention available to advisers from all Charter practices. Charter subsidises the expenses of those who attend the convention up to a maximum value of \$1,200 per annum per practice.

Charter Leaders program

Each year, practices that meet particular criteria may be awarded entry into the Charter Leaders program. The criteria is based on a combination of factors including the quality of services, business goals and rankings against other practices in Charter. The Charter Leaders program provides access to personal and professional development courses organised by Charter. Charter may subsidise the cost of these courses up to amounts as determined by Charter from time to time.

Business support

We might receive financial assistance including subsidies or reimbursements for accounting, legal and bank fees; marketing or other once-off transitional support costs, to help us grow our business or implement appropriate succession planning options.

Placement fees

From time to time Charter will receive fees from brokers or product issuers (including AMP group companies) for arranging client participation in Initial Public Offerings (IPOs) of financial products. The fee, which is generally a percentage of the fee paid to the broker, varies from offer to offer and by the level of participation by Charter. We may share in this fee based on the level of participation by our clients.

Relationships and associations

It is important that you are aware of the relationships that Charter has with providers of financial services and products as they could be seen to influence the advice you receive.

About our licensee

Charter Financial Planning Limited

ABN 35 002 976 294

Australian Financial Services Licensee and Australian Credit Licensee No: 234665

Charter is a member of the AMP Group and has:

- Approved the distribution of this guide
- Authorised us to provide advice and other services as described in this guide
- Authorised us to provide credit assistance services to you

Charter's registered office is located at 33 Alfred Street, Sydney, NSW 2000.

About the AMP Group

Charter is a member of the AMP group of companies. We can provide advice on products from a wide range of financial product providers, some of which are part of the AMP Group and as such Charter is affiliated with:

- | | |
|--|---|
| — National Mutual Funds Management Limited | — AMP Capital Funds Management Limited |
| — NMMT Limited | — AMP Capital Investors Limited |
| — N.M. Superannuation Pty Limited | — AMP Superannuation Limited |
| — Multiport Pty Limited | — AMP Life Limited |
| — ipac asset management limited | — Cavendish Superannuation Pty Ltd |
| — AMP Bank Limited | — Australian Securities Administration Limited (ASAL) |
| — SMSF Administration Solutions Pty Ltd | — SuperConcepts Pty Ltd |

If we recommend a product issued by the AMP Group or a third party product issuer, they will benefit from our recommendation by receiving product, administration and investment fees, as well as fees paid by fund managers to distribute their product. These fees are all disclosed in the relevant PDS or IDPS guide.

Authorised representatives and/or staff employed in our business may hold shares in AMP Limited, whose share price may be favourably affected by the sale of products issued by AMP Group companies.

Our referral arrangements

We may receive payments to refer you to other service providers. These amounts do not involve additional costs and will be disclosed in your statement of advice. Our current referral arrangements are detailed below:

Provider	Services	Payment arrangement
AMP Bank	Home and business lending services	Up to 0.85% initial commission and up to 0.25% ongoing commission For example, for a loan of \$100,000, we would receive up to \$850.00 initial commission and up to \$250.00 ongoing commission.

Provider	Services	Payment arrangement
Allianz	General Insurance	\$45 per policy written, of which AFG receives between 0-3% and passes the remaining 97-100% to Charter Financial Planning Limited. They then receive 3% and we will receive the remaining 97%.

Where you have been referred to us by someone else we may pay them a fee, commission or some other benefit in relation to that referral. Our current referral arrangements are detailed below:

Provider	Payment arrangement
Brokara Pty Ltd ATF Sheppard Family Trust	Up to 15% of initial and ongoing fee, where possible.
Lavelle Family Investments Pty Ltd ATF The Lavelle Family Trust	Up to 15% of initial and ongoing fee, where possible.
Vizion Accounting Pty Limited	Up to 20% of initial insurance commissions and up to 10% of initial plan fee, where possible.

Our joint venture referral arrangements

We control a percentage of the equity interests in the joint venture providing the services listed below. As a result, we will benefit from fees, dividends or income received from the profits or value of the joint venture that may result from any payments or other benefits received in respect of the services provided to you.

Provider and relationship	Services	Payment arrangement
DSR Partners and Country Wide Wealth together operate an entity known as Coast Wide Wealth. Coast Wide Wealth is a division of Country Wide Wealth	Accounting Services	Coast Wide Wealth (a division of Country Wide Wealth) pays Davis Stewart Rowland 15% of our initial and ongoing fee. Davis Stewart Rowland also has a 50% equity share of Coast Wide Wealth. Country Wide Wealth has a 50% equity holding in Coast Wide Wealth and is entitled to receive 85% of the income.
Keith Sheppard, Mark Lavelle and Country Wide Wealth operate an entity known as Country Wide Home Loans. Country Wide Home Loans is a division of Country Wide Wealth	Financial Services	Country Wide Home Loans will receive 100% of both initial and ongoing commissions which are received as a result of the home loan advice provided to you in this financial plan. Country Wide Wealth has a 33.3% equity interest in Country Wide Home Loans and will receive 33.3% of the remaining net profit as a result of this advice. Brokara Pty Ltd ATF Sheppard Family Trust has a 33.3% equity interest in Country Wide Home Loans. They will receive 70% of initial income

	<p>generated by Keith Sheppard as a result of this advice, and 33.3% of the remaining net profit.</p> <p>Lavelle Family Investments Pty Ltd ATF The Lavelle Family Trust has a 33.3% equity interest in Country Wide Home Loans. They will receive 70% of initial income generated by Mark Lavelle as a result of this advice, and 33.3% of the remaining net profit.</p>
<p>Chapmans Accountants and Country Wide Wealth together operate entity known as O'Brien Chapman Pty Ltd ATF The OBrien Chapman Unit Trust (trading as O'Brien Chapman).</p> <p>O'Brien Chapman is a division of Country Wide Wealth.</p>	<p>Accounting Services</p> <p>O'Brien Chapman Pty Ltd ATF The O'Brien Chapman Unit Trust is a division of Country Wide Wealth. It pays Chapmans Accountants 15% of our initial and ongoing fee. Chapmans Accountants also has a 50% equity share of O'Brien Chapman Pty Ltd ATF The O'Brien Chapman Unit Trust .</p> <p>Country Wide Wealth has a 50% equity holding in this joint venture and is entitled to receive 85% of the income.</p>

Confidence in the quality of our advice

If at any time you feel like you are not satisfied with our services, the following will help you understand your options and find a resolution.

- Contact your adviser and tell them about your complaint.
- If your complaint is not satisfactorily resolved within three days, please contact AMP Advice Complaints on advicecomplaints@amp.com.au, or put your complaint in writing and send it to:

Attention: National Manager, Advice Complaints

33 Alfred Street
Sydney NSW 2000

- AMP Advice Complaints will try to resolve your complaint quickly and fairly.
- Until 31 October 2018, if your complaint has not been resolved satisfactorily, you may escalate your complaint to one of the following External Dispute Resolution Schemes listed below.

Any issues relating to financial advice, investments, superannuation or insurance matters	Financial Ombudsman Service (FOS) GPO Box 3 Melbourne VIC 3001 1800 367 287 www.fos.org.au info@fos.org.au
Issues relating to credit matters	Credit and Investment Ombudsman (CIO) Reply Paid 252 South Sydney NSW 1234 1800 138 422 www.cio.org.au
Any issue relating to your personal information	The Privacy Commissioner GPO Box 5218 Sydney NSW 2001 1300 363 992 privacy@privacy.gov.au

The above external dispute handling bodies are current as at August 2018.

From 1 November 2018, you can contact the following external dispute handling bodies in relation to your complaint:

Any issues relating to financial advice, investments, superannuation or insurance matters	Australian Financial Complaints Authority (AFCA) GPO Box 3 Melbourne VIC 3001 1800 931 678 www.afca.org.au info@afca.org.au
Any issue relating to your personal information	The Privacy Commissioner GPO Box 5218

Sydney NSW 2001

1300 363 992

privacy@privacy.gov.au

You may also contact the **Australian Securities & Investments Commission (ASIC)** on 1300 300 630 (free call info line) to make a complaint and obtain information about your rights.

Professional indemnity insurance

We maintain professional indemnity insurance to cover our advice and the recommendations provided by your adviser. Charter is also covered by professional indemnity insurance and this satisfies the requirements imposed by the Corporations Act 2001 and National Consumer Credit Protection Act. The insurance covers claims arising from the actions of former employees or representatives of Charter, even where subsequent to these actions they have ceased to be employed by or act for Charter.

Your privacy

We are committed to protecting your privacy. Below we outline how we maintain the privacy of the information we collect about you.

Privacy Collection Statement

As part of the financial planning process, we need to collect information about you. Where possible we will obtain that information directly from you, but if authorised by you we may also obtain it from other sources such as your employer or accountant. If that information is incomplete or inaccurate, this could affect our ability to fully or properly analyse your needs, objectives and financial situation, so our recommendations may not be completely appropriate or suitable for you.

We are also required under the Anti-Money-Laundering and Counter-Terrorism Financing Act (AML/CTF) 2006 to implement client identification processes. We will need you to present identification documents such as passports and driver's licences in order to meet our obligations.

We keep your personal information confidential, and only use it in accordance with our Privacy Policy. Some of the ways we may use this information are set out below:

- Your adviser and Charter may have access to this information when providing financial advice or services to you;
- Your adviser may, in the future, disclose information to other financial advisers, brokers and those who are authorised by Charter to review customers' needs and circumstances from time to time, including other companies within the AMP group;
- Your information may be disclosed to external service suppliers both here and overseas who supply administrative, financial or other services to assist your adviser and the AMP group in providing financial advice and services to you. A list of countries where these service providers are located can be found in the AMP Privacy Policy;
- Your information may be used to provide ongoing information about opportunities that may be useful or relevant to your financial needs through direct marketing (subject to your ability to opt-out as set out in the AMP Privacy Policy); and
- Your information may be disclosed as required or authorised by law and to anyone authorised by you.

Your adviser and Charter will continue to take reasonable steps to protect your information from misuse, loss, unauthorised access, modification or improper disclosure. You can request access to the information your adviser or Charter holds about you at any time to correct or update it as set out in the AMP Privacy Policy. The AMP Privacy Policy also contains information about how to make a complaint about a breach of the Australian Privacy Principles.

For a copy of AMP's Privacy Policy visit <http://www.amp.com.au/privacy> or you can contact us.

Australian Finance Group (AFG)

AFG is an aggregator and it acts as a gateway or interface between mortgage brokers and lenders by providing an IT platform through which brokers submit loan applications and deal with lenders as well as providing some other ancillary services.

Lenders may offer incentives that are paid directly to the Accredited Mortgage Consultant. These may include indirect benefits for example business lunches, tickets to sporting or cultural events, corporate promotional merchandise and other minor benefits.

Accredited Mortgage Consultants may be invited to attend the AFG National Conference. This is an annual event which offers Accredited Mortgage Consultants the opportunity for professional development and to hear industry updates and educational presentations by AFG and lender sponsors. AFG subsidises some costs of attendance, which may include meals and accommodation. The value will depend upon a range of factors, including the nature of the courses and events planned.

Any benefits that we may receive that are related to a loan recommended to you which is regulated by the National Consumer Credit Protection Act, will be disclosed in our advice to you prior to application.

Our Financial Advisers and Credit Advisers

About Troy Chapman

Experience	Troy has been working in financial services since 2000.
Memberships	AFA (Association of Financial Advisers Ltd)
Designations	FChFP (Fellow Chartered Financial Practitioner)
Phone	02 4342 9215
Email	troy@countrywidewealth.com.au
Authorised representative number	345133
Credit representative number	406350

Qualifications

Bachelor of Agricultural Economics (Honours)
Advanced Diploma in Financial Services (Financial Planning)

The advice and services I can provide

I am authorised to provide all the services listed in the **Our advice and services** section, except for the following:

- Commercial loans
- SMSF loans
- Rural loans
- Loans including mortgages and personal loans, reverse mortgages and deposit bonds

Should you require advice and services that extend beyond my authority I can refer you to a suitably qualified adviser

I am also a Credit Representative of Charter and am authorised to provide credit advice regarding how to structure debt, suitability of existing loan structures and repayment options. If you require advice involving mortgages or other lending products, I can refer you to an Accredited Mortgage Consultant.

How I am paid

I receive the following from our practice:

- salary
- equity in the practice

As a financial adviser with Country Wide Wealth, Troy Chapman may be given 100% equity in our practice

About Joanne Bailey

Experience	Joanne has been working in financial services for over 11 years.
Qualifications	Dip. FS (FP)
Phone	02 4342 9215
Email	joanne@countrywidewealth.com.au
Authorised representative number	1268619
Credit representative number	512322

Qualifications

Diploma of Financial Planning (RG146)

The advice and services I can provide

I am authorised as a Client service adviser and can assist existing clients with their ongoing advice and service needs. The areas I am not authorised to cover are:

- Commercial loans
- SMSF loans
- Rural loans
- Estate planning
- Exchange traded funds (ETF) and Listed investment companies (LIC)
- Gearing and margin lending
- Securities (including listed securities)
- Self-managed super funds (SMSF)
- SMSF borrowing
- Loans including mortgages and personal loans, reverse mortgages and deposit bonds

Should you require advice and services that extend beyond my authority I can refer you to a suitably qualified adviser.

I am also a Credit Representative of Charter and am authorised to provide credit advice regarding how to structure debt, suitability of existing loan structures and repayment options. If you require advice involving mortgages or other lending products, I can refer you to an Accredited Mortgage Consultant.

How I am paid

I receive the following from our practice:

- salary

About Keith Sheppard

Experience	Keith has been working in financial services for over 30 years
Phone	0410 451 671
Email	keith@countrywidewealth.com.au
Credit representative number	371771

Qualifications

Cert IV FS (Finance/Mortgage Broking)

Diploma of Finance and Mortgage Broking Management

Professional memberships

Member of MFAA (Mortgage and Finance Association of Australia)

The advice and services I can provide

I am an Accredited Mortgage Consultant and as a credit representative of Charter I am authorised to provide mortgage and finance broking activities, including assisting you to apply for a loan.

Subject to meeting lender credit criteria, I can advise on loans relating to:

- residential mortgages and home loans
- deposit bonds
- personal loans
- reverse mortgages

Subject to meeting the lender's credit criteria, along with any additional lender or AFG accreditations, I can also advise on and/or arrange loans relating to:

- commercial loans
- SMSF loans
- rural loans

The full list of approved lenders is available on request but is not an exhaustive list of lenders who offer credit of the nature you may seek.

How I am paid

I receive the following from our practice:

- equity in the practice
- share of revenue
 - Country Wide Home Loans will receive 100% of both initial and ongoing commissions which are received as a result of the home loan advice provided to you in this financial plan.
 - Brokara Pty Ltd ATF Sheppard Family Trust has a 33% equity interest in Country Wide Home Loans. They will receive 70% of initial income generated by Keith Sheppard as a result of this advice, and 33% of the remaining net profit.

About Mark Lavelle

Experience	Mark has been working in financial services for over 29 years
Phone	0439 781 970
Email	mark@countrywidewealth.com.au
Credit representative number	505689

Qualifications

Cert IV FS (Finance/Mortgage Broking)

Diploma of Finance and Mortgage Broking Management

Professional memberships

Member of MFAA (Mortgage and Finance Association of Australia)

The advice and services I can provide

I am an Accredited Mortgage Consultant and as a credit representative of Charter I am authorised to provide mortgage and finance broking activities, including assisting you to apply for a loan.

Subject to meeting lender credit criteria, I can advise on loans relating to:

residential mortgages and home loans deposit bonds
personal loans reverse mortgages

Subject to meeting the lender's credit criteria, along with any additional lender or AFG accreditations, I can also advise on and/or arrange loans relating to:

commercial loans

SMSF loans

rural loans

The full list of approved lenders is available on request but is not an exhaustive list of lenders who offer credit of the nature you may seek.

How I am paid

I receive the following from our practice:

equity in the practice

share of revenue

- Country Wide Home Loans will receive 100% of both initial and ongoing commissions which are received as a result of the home loan advice provided to you in this financial plan.
- Lavelle Family Investments Pty Ltd ATF The Lavelle Family Trust has a 33% equity interest in Country Wide Home Loans. They will receive 70% of initial income generated by Mark Lavelle as a result of this advice, and 33% of the remaining net profit.

Schedule of fees

These prices should be used as a guide only. We will discuss your individual needs and agree our fees with you. The actual agreed fees will depend on factors such as the complexity of your circumstances and goals and the scope of the advice.

Initial service fees

These are fees paid when you have agreed to receive our advice:

Initial service	Fee amount
Initial Advice	Starting from \$0 - \$5,500 (complex advice may be charged at a higher rate but will be agreed in advance)

Ongoing service fees

We provide ongoing services to help you stay on track to meet your goals. The cost of these services are as follows:

Ongoing service	Fee amount
Ongoing Adviser Service	Starting from \$0 (Essentials Package) Starting from \$858 (Standard Package)

Commissions

I do not receive commissions on investments through new superannuation, managed funds or retirement products. However, some products, particularly older products, may attract commissions.

Any commission amounts will be disclosed to you when providing my advice. The following table is a guide of commissions I may receive.

Product type	Initial commission	Ongoing commission	Example
Insurance (including those held within superannuation)	Up to 88% of the first year's premium for new policies. We may receive commissions on increases or additions to existing policies of up to 130%.	Up to 33% of the premium each following year.	If your insurance premium was \$1,000, we would receive an initial commission of up to \$880. We would receive an ongoing commission of up to \$330.00 pa.
Loans	Up to 1.10% of the initial loan balance, of which AFG retains between 0-3% and passes the remaining 97-100%* on to Charter. Charter then retains 3% and we will receive the remaining 97%.	Up to 0.55% of the outstanding loan balance each year, of which AFG retains between 0-3% and passes the remaining 97-100%* on to Charter. Charter then retains 3% and we will receive the remaining 97%.	If your loan balance was \$100,000, initial commission would be up to \$1,100, of which AFG retains up to \$33 and Charter receives \$1,067. Charter then passes (\$1,067 x 97%) \$1,035 on to us. On an annual basis, the commission on a \$100,000 loan balance would be up to \$550, of which AFG retains up to \$16.50 and Charter receives \$533.50. Charter then passes (\$533.50 x 97%) \$517 to us.
Deposit bonds	Up to 22% of the deposit bond fee, of	N/A	For example, if your deposit bond fee is \$400, the

which AFG retains between 0-3% and passes the remaining 97-100%* on to Charter. Charter then retains 3% and we will receive the remaining 97%.

commission would be up to \$88, of which AFG retains up to \$2.64 and Charter receives \$85.36. Charter then passes (\$85.36 x 97%) \$83 to us.

All fees and charges include GST.

* Where the lender is AMP Bank, 100% of commissions received will be passed on to the Licensee and then distributed by us accordingly. In all other circumstances, 97% of the commissions received will be passed on to the Licensee and then distributed by us accordingly.

If an agreed advice fee is charged then we may rebate all or some of the commission.